




www.vipac.com.au

VIPAC PLUMBING PRODUCTS LABORATORY 279 Normanby Road, Port Melbourne VIC 3207. Phone: (+61 3) 9647 9700			
Client	Australian Bathroom Concepts	Report No	30P-08-0111-TRP-413414-0 - Report

TEST REPORT
ITEM TESTED: Shower Base
TESTED TO: Clause 1.5.9 of AS 3588:1996
PRODUCT: Australian Bathroom Concepts Shower Base Sample
This document shall not be reproduced, except in full without the written permission of Vipac Engineers & Scientist Ltd.

PREPARED BY  Date 8 July 2008
Mr. Terry Nguyen
Project Engineer

REVIEWED BY  Date 8 July 2008
Mr Frank Iapozzuto
Nata Signatory

1. INTRODUCTION

The VIPAC Plumbing Products Laboratory tested a shower base to Appendix A of AS 3588:1996

2. APPLICABLE DOCUMENTS

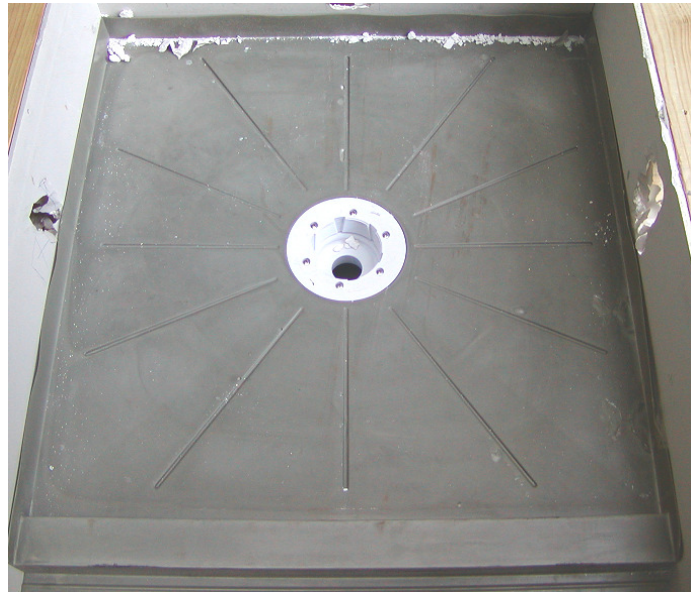
The tests and data analysis were carried out in accordance with the following standards.

2.1 AS 3588:1996 Shower Bases and Shower Modules

3. SPECIMEN DESCRIPTION

The specimen is designated in this report as follows:

Product Code	Description
Sample	Australian Bathroom Concepts Shower Base Sample



4. PERFORMANCE

Clause 1.5.9 of AS 3588:1996 – Strength and Support Test

When tested in accordance with Appendix A of AS 3588:1996, the shower base is tested for its rigidity. 100kg loading is applied using a suitable pad to designated parts of the shower base and checked for deformation, cracking crazing or any other forms of failure.

Requirement	Observation			Result Appendix A AS 3588:1996
	Position	Allowed Deflection (mm)	Recorded Deflection (mm)	
Test 1 The deformations at points marked A B1, B2, B3, C1, C2, and C3 shall not show a deflection greater than stated in Table A1.	A	2.5	0.35	Conforms
	A*	0.2	0.03	
	C1	0.5	0.03	
	C2	0.5	0.00	
	C3	0.5	0.05	
	B1	0.5	0.30	
	B2	0.5	0.14	
	B3	0.5	0.06	
Test 2	Not Applicable			
Test 3 The shower base shall show no signs of cracking crazing or permanent deformation after loading of points D and each point of E.	There were no signs of any cracking, crazing or other permanent deformation during or after loading.			

*Permanent Deflection

TABLE A1
MAXIMUM PERMISSIBLE DEFLECTIONS

Points marked	Deflection, mm
A, F	2.5
A*	0.2
B1, B2, B3	0.5
C1, C2, C3	0.5
D	2.5
D*	0.2

* Permanent deflection.

Figure 4.1 "Table A1 Maximum Permissible Deflections" Appendix A of AS 3588:1996

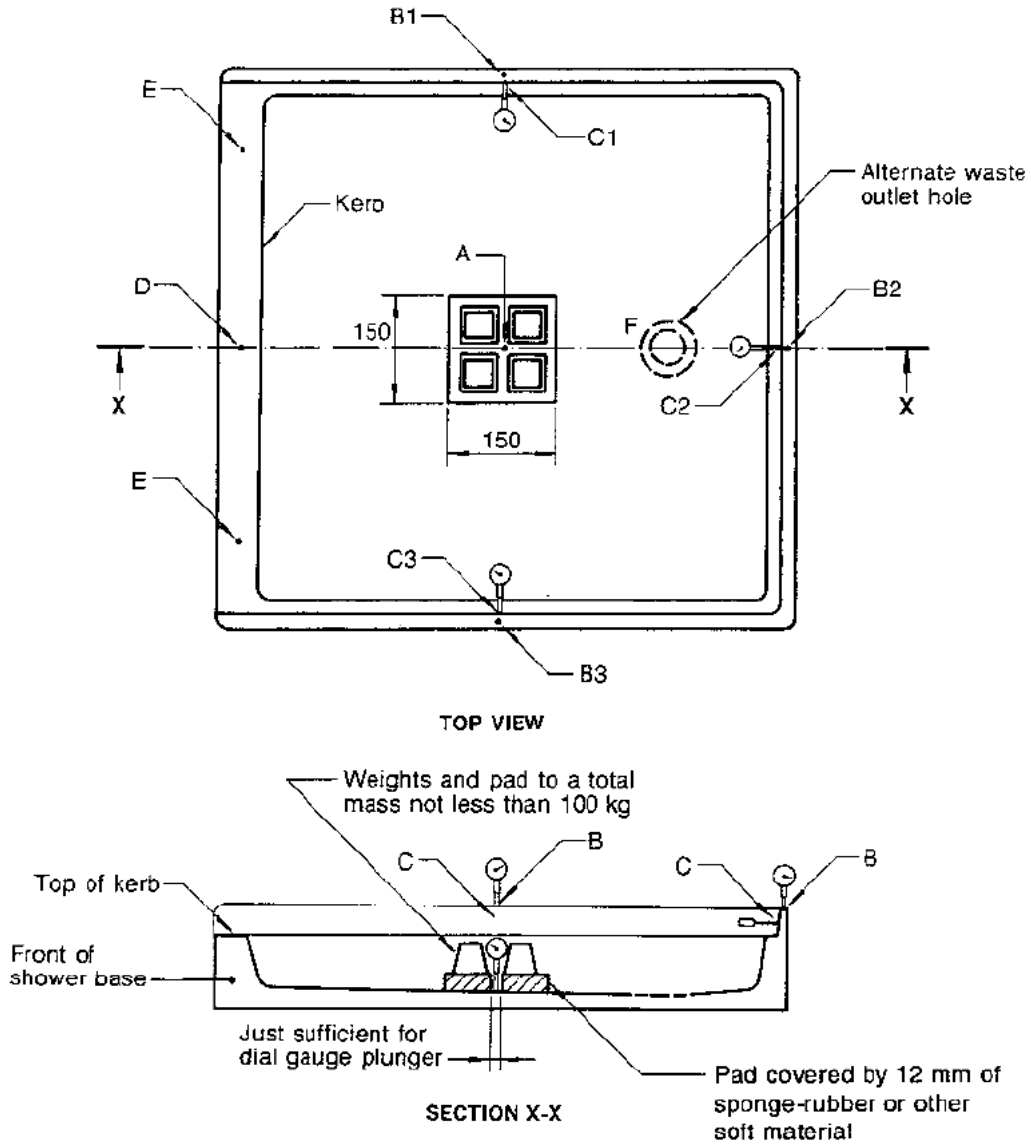


Figure 4.2 "Figure A1 Rigidity Test" Appendix A of AS 3588:1996