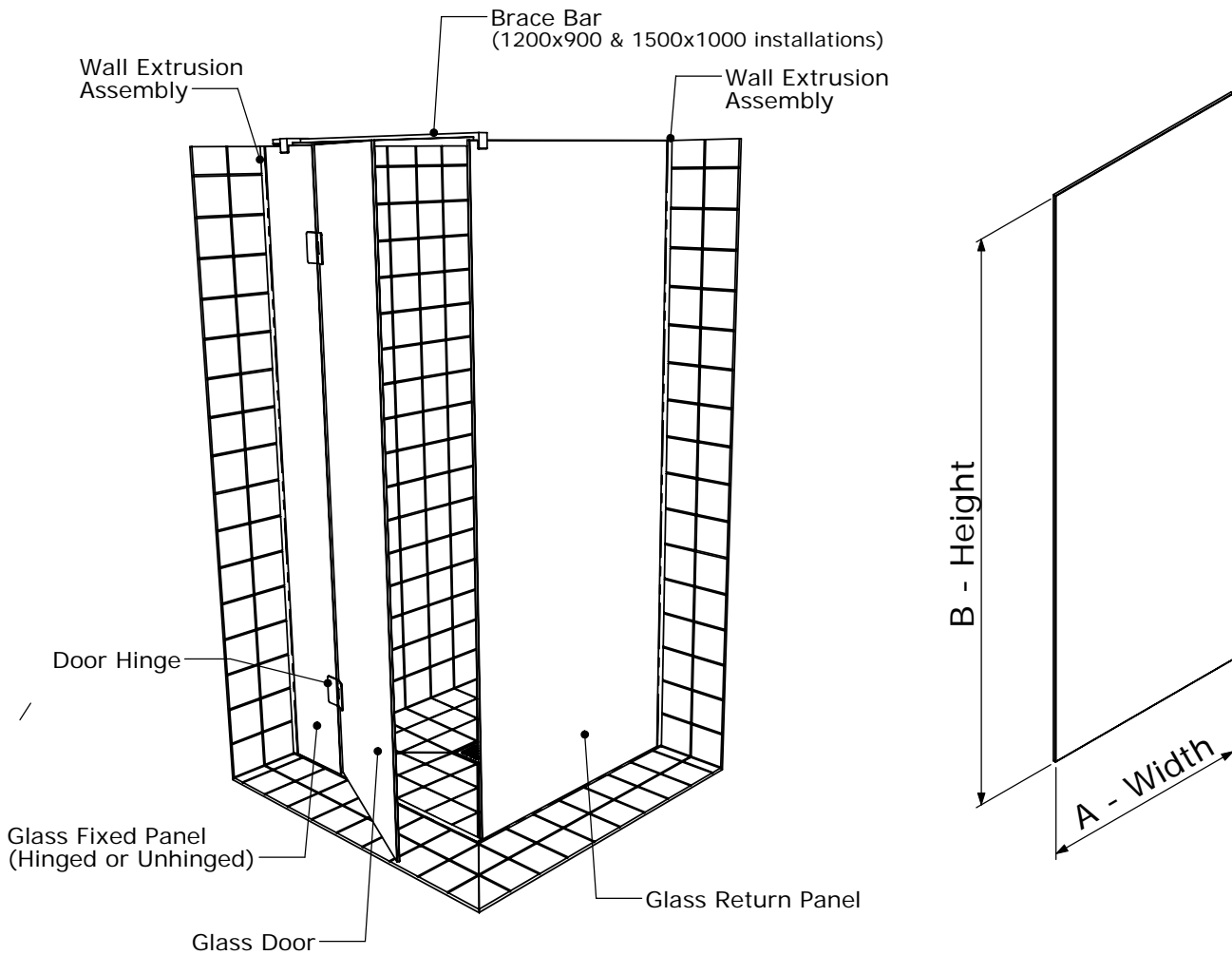

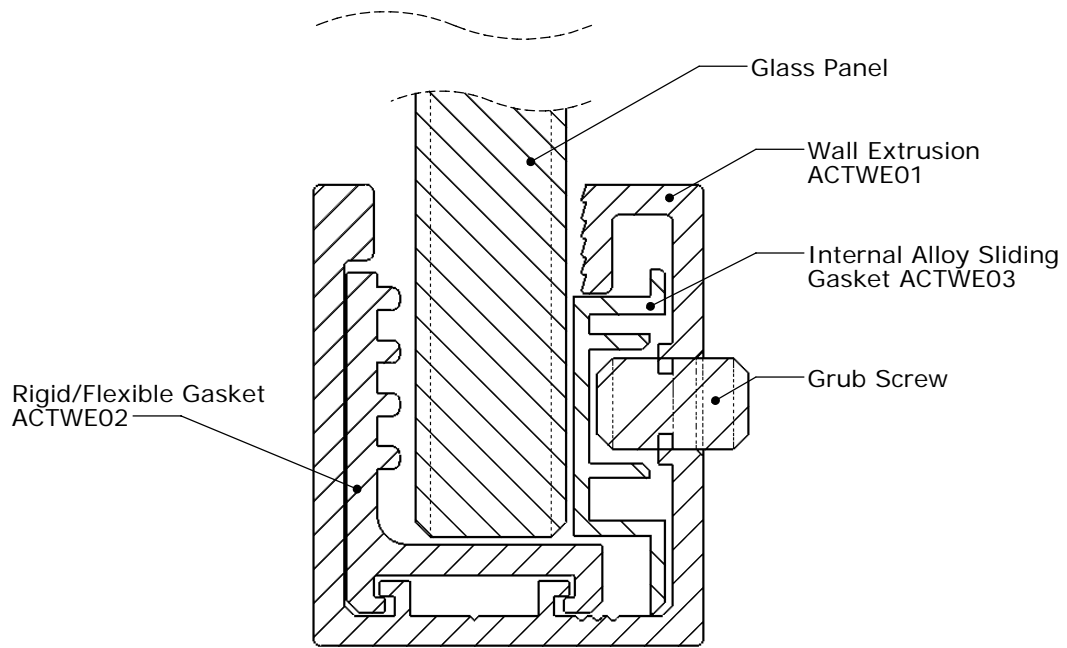


## Glass Sizing Chart

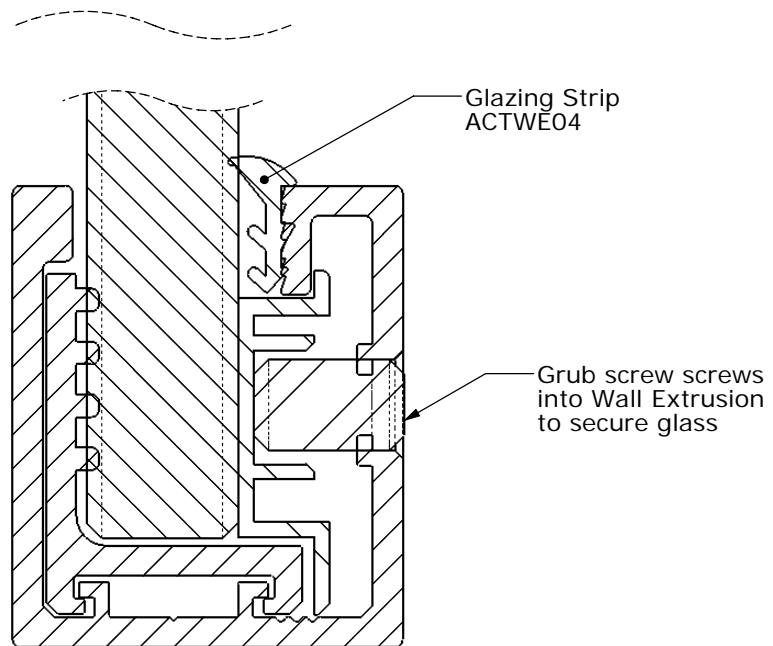
Configuration	Product Code	A Length	B Length	C Thickness
Glass Fixed Panel with Hinge (GFP-DBH)	GFP-DBH01	247	1991.5	10
	GFP-DBH02	347	1991.5	10
	GFP-DBH03	447	1991.5	10
	GFP-DBH04	115	1991.5	10
	GFP-DBH05	165	1991.5	10
	GFP-DBH06	215	1991.5	10
Glass Door Panel (GDP-DB)	GDP-DBH01	600	1974.5	10
	GDP-DBH02	700	1974.5	10
Glass Return Panel (GRT-DB)	GRT-DB01	862	1991.5	10
	GRT-DB02	962	1991.5	10
Glass Fixed Panel with Unhinged (GFP-DBU)	GFP-DBUH01	115	1991.5	10
	GFP-DBUH02	165	1991.5	10
	GFP-DBUH03	215	1991.5	10
	GFP-DBUH04	381	1991.5	10




 <b style="font-size: 24px;">Drybase</b> SHOWER SYSTEMS	<h3 style="margin: 0;">Glass Panel Sizing Specifications</h3> 1002 - ACT Showerbase
	Glass Enclosure
	1002-05-DrybaseGlassPanel
25/07/2008	



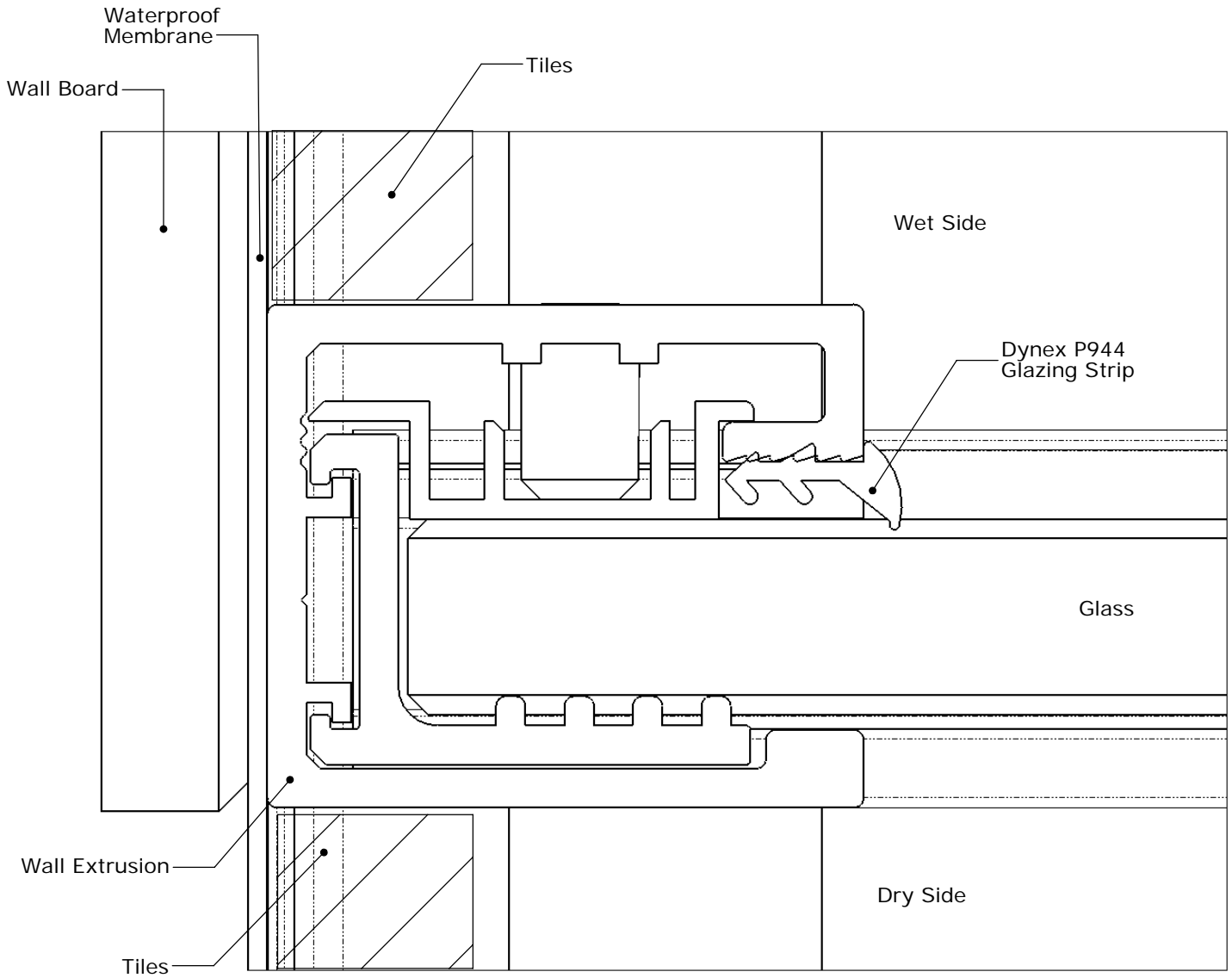
Wall Extrusion - Open




Wall Extrusion - Closed

 <b>Drybase</b> SHOWER SYSTEMS	<b>Wall to Glass Enclosure Assembly</b> 1002-ACT Drybase
	Glass Enclosure
	1002-05-ACTWallExtrusion
25/07/2008	

# Typical Wall to Glass Enclosure Assembly



 <b>Drybase</b> SHOWER SYSTEMS	<b>Wall to Glass Enclosure Assembly</b>
	1002 - ACT Drybase
	Glass Enclosure
	1002-05-2SidedLevelEntryEnclosure
	25/07/2008